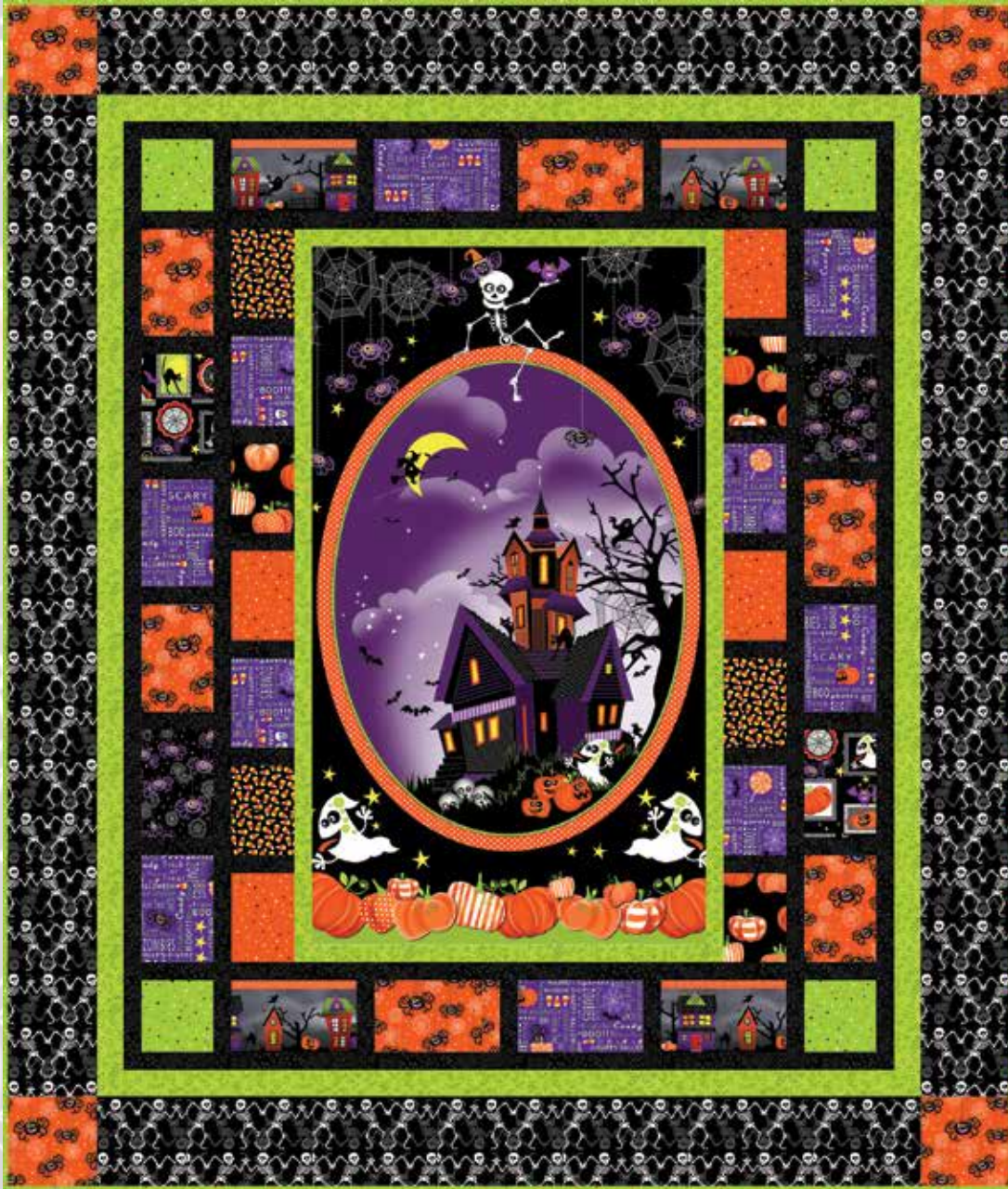


Frightful & Delightful



Quilt 1

Skill Level: Beginner

A Free Project Sheet From

 Henry Glass & Co., Inc.



[facebook](#)

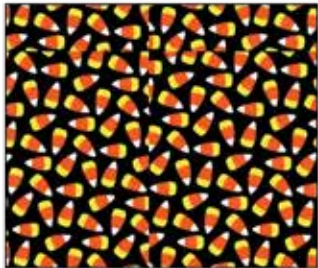
Finished Quilt Size: 56" x 66"
49 West 37th Street, New York, NY 10018
tel: 212-686-5194 fax: 212-532-3525
Toll Free: 800-294-9495
www.henryglassfabrics.com

FRIGHTFUL & DELIGHTFUL

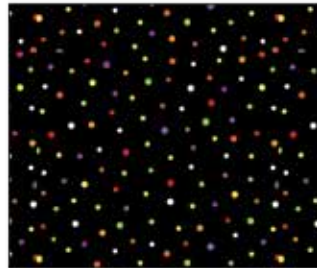
Finished Quilt Size: 56" x 66"

Quilt 1

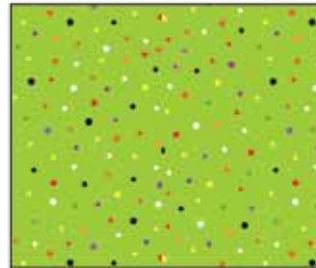
Fabrics in the Collection



Candy Corn - Black
9904G-99



Dots - Black
9903G-99



Dots - Green
9903G-66



Dots - Orange
9903G-33



Spiders - Black
9902G-99



Spiders - Orange
9902G-33



Pumpkins - Black
9901G-99



Halloween Squares - Black
9900G-99



Halloween Squares - Orange
9900G-33



Halloween Words - Black
9899G-99



Halloween Words - Purple
9899G-55



Skeletons - Black
9898G-99

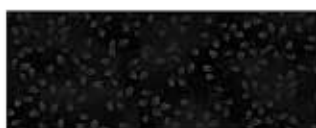


Stripe - Black
9897G-99



Panel - Black
9896PG-99

Select Fabrics from Folio



Folio - Black
7755-99



Folio - Lime Green
7755-69



Folio - Orange
7755-36

Materials

1 panel	Panel - Black (A)	9896PG-99
1 1/8 yards	Folio - Lime Green (B)	7755-69*
2/3 yard	Folio - Black (C)	7755-99
1/4 yard	Dots - Green (D)	9903G-66
1/3 yard	Stripe - Black (E)	9897G-99
1/2 yard	Halloween Words - Purple (F)	9899G-55
1/2 yard	Spiders - Orange (G)	9902G-33
1/4 yard	Dots - Orange (H)	9903G-33
1/4 yard	Pumpkins - Black (I)	9901G-99
1/4 yard	Spiders - Black (J)	9902G-99
1/4 yard	Halloween Squares - Black (K)	9900G-99
1/4 yard	Candy Corn - Black (L)	9904G-99
1 5/8 yards	Skeletons - Black (M)	9898G-99
3 3/4 yards	Halloween Words - Black (Backing)	9899G-99

*Includes binding

Quilt Cutting Instructions

Please note: all strips are cut across the width of fabric (WOF) from selvage to selvage edge unless otherwise noted.

From the Panel - Black (A):

- Fussy cut (1) 22 1/2" x 39 1/2" panel.

From the Folio - Lime Green (B), cut:

- (2) 2" x 39 1/2" WOF strips.
- (2) 2" x 25 1/2" WOF strips.
- (3) 2" x WOF strips. Sew the strips together end to end with diagonal seams and cut (2) 2" x 53 1/2" strips.
- (3) 2" x WOF strips. Sew the strips together end to end with diagonal seams and cut (2) 2" x 46 1/2" strips.
- (7) 2 1/2" x WOF strips for the binding.

From the Folio - Black (C), cut:

- (2) 1 1/2" x WOF strips. Sub-cut strips into (12) 1 1/2" x 4" strips.
- (1) 4 1/2" x WOF strip. Sub-cut strip into (20) 1 1/2" x 4 1/2" strips.
- (4) 1 1/2" x 41 1/2" WOF strips.
- (5) 1 1/2" x WOF strips. Sew the strips together end to end with diagonal seams and cut (2) 1 1/2" x 51 1/2" strips and (2) 1 1/2" x 43 1/2" strips.

From the Dots - Green (D), cut:

- (1) 4 1/2" x WOF strip. Sub-cut strip into (4) 4 1/2" squares.

From the Stripe - Black (E), cut:

- (1) 7 1/2" x WOF strip. Sub-cut strip into (4) 4 1/2" x 7 1/2" strips.

From the Halloween Words - Purple (F), cut:

- (1) 7 1/2" x WOF strip. Sub-cut strip into (2) 4 1/2" x 7 1/2" strips and (4) 4 1/2" x 6 1/2" strips.
- (1) 4" x WOF strip. Sub-cut strip into (4) 4" x 5 1/2" strips.

From the Spiders - Orange (G), cut:

- (1) 7 1/2" x WOF strip. Sub-cut strip into (2) 4 1/2" x 7 1/2" strips and (4) 4 1/2" x 6 1/2" strips.
- (1) 5 1/2" x WOF strip. Sub-cut strip into (4) 5 1/2" squares.

From the Dots - Orange (H), cut:

- (1) 4" x WOF strip. Sub-cut strip into (4) 4" x 5 1/2" strips.

From the Pumpkins - Black (I), cut:

- (1) 4" x WOF strip. Sub-cut strip into (3) 4" x 5 1/2" strips.

From the Spiders - Black (J), cut:

- (1) 6 1/2" x WOF strip. Sub-cut strip into (2) 4 1/2" x 6 1/2" strips.

From the Halloween Squares - Black (K), cut:

- (1) 6 1/2" x WOF strip. Sub-cut strip into (2) 4 1/2" x 6 1/2" strips.

From the Candy Corn - Black (L), cut:

- (1) 4" x WOF strip. Sub-cut strip into (3) 4" x 5 1/2" strips.

From the Skeletons - Back (M), cut:

- (2) 5 1/2" x 56 1/2" LOF strips.
- (2) 5 1/2" x 46 1/2" WOF strips from the remaining fabric, piece as needed.

From the Halloween Words - Black (Backing), cut:

- (2) 64" x WOF strips for the backing. Sew the strips together and trim to make the 64" x 74" back.

Sewing Instructions

1. Sew (1) 2" x 39 1/2" Fabric B strip to each side of the 22 1/2" x 39 1/2" Fabric A panel. Sew (1) 2" x 25 1/2" Fabric B strip to the top and to the bottom of the Fabric A panel. Trim the block to measure 24 1/2" x 41 1/2" to make the Center Block (Fig. 1).

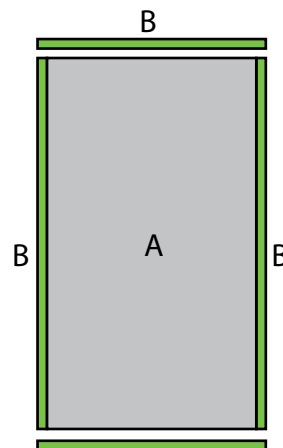


Fig. 1

Trim Block to measure 24 1/2" x 41 1/2" after the borders are added

FRIGHTFUL & DELIGHTFUL

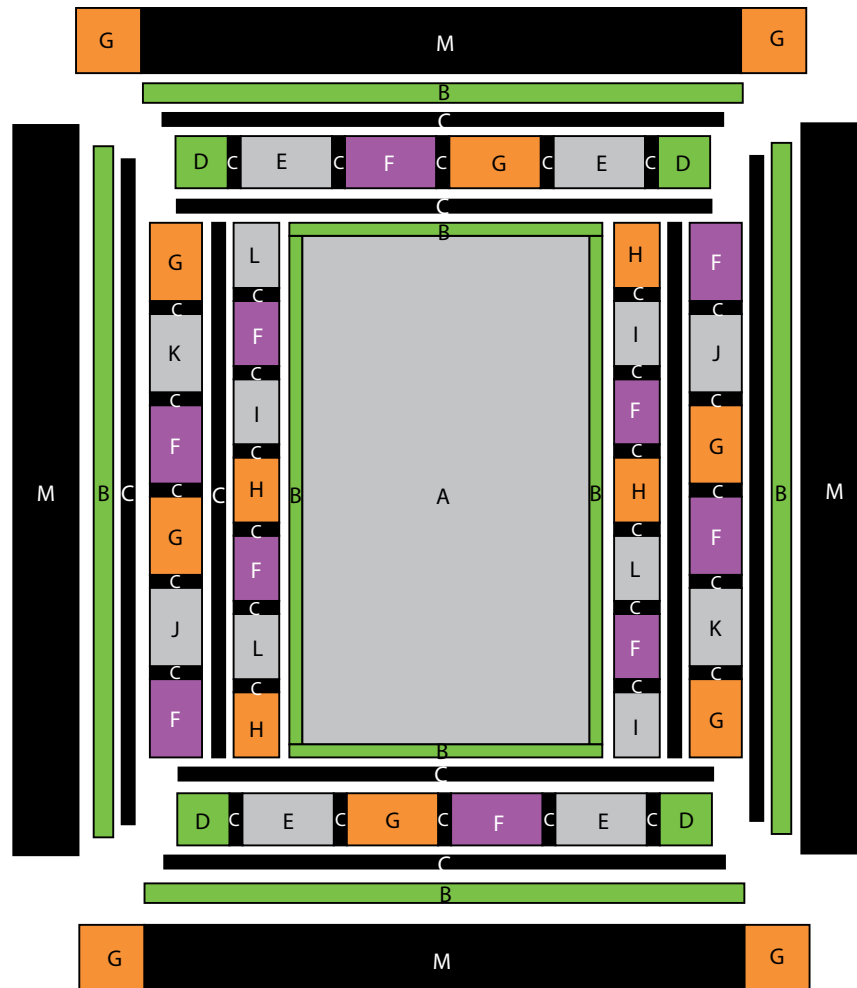
Quilt 1

2. Sew (7) assorted 4" x 5 1/2" strips and (6) 1 1/2" x 4" Fabric C strips together, alternating them, to make (1) strip. Repeat to make a second strip. Sew (1) strip to each side of the Center Block.
3. Sew (1) 1 1/2" x 41 1/2" Fabric C strip to each side of the Center Block.
4. Sew (6) assorted 4 1/2" x 6 1/2" strips and (5) 1 1/2" x 4 1/2" Fabric C strips together, alternating them, to make (1) strip. Repeat to make a second strip. Sew (1) strip to each side of the Center Block.
5. Sew (1) 1 1/2" x 41 1/2" Fabric C strip to the top and to the bottom of the Center Block.
6. Sew (2) 4 1/2" Fabric D squares, (5) 1 1/2" x 4 1/2" Fabric C strips and (3) assorted 4 1/2" x 7 1/2" strips together to make (1) strip. Repeat to make a second strip. Sew the strips to the top and to the bottom of the Center Block to make the quilt top.

Quilt Top Assembly

(Refer to the Quilt Layout while assembling.)

7. Sew (1) 1 1/2" x 51 1/2" Fabric C strip to each side of the quilt top. Sew (1) 1 1/2" x 43 1/2" Fabric C strip to the top and to the bottom of the quilt top.
8. Sew (1) 2" x 53 1/2" Fabric B strip to each side of the quilt top. Sew (1) 2" x 46 1/2" Fabric B strip to the top and to the bottom of the quilt top.
9. Sew (1) 5 1/2" x 56 1/2" Fabric M strip to each side of the quilt top. Sew (1) 5 1/2" Fabric G square to each end of (1) 5 1/2" x 46 1/2" Fabric M strip. Repeat to make a second strip. Sew the strips to the top and to the bottom of the quilt top.
10. Layer and quilt as desired.
11. Sew the (7) 2 1/2" x WOF Fabric B strips together, end to end with 45-degree seams, to make the binding. Fold this long strip in half lengthwise with wrong sides together and press.
12. Bind as desired.



Quilt Layout